



■ STYLE CONCEPTS



MADEIRA 3-D EMBROIDERY WITH FOAM



Azusa Dannohara



L'Officiel Ukraine



Madeira



Nick Cave

GLOCAL STYLE CONCEPT

Countering the globalization trend, a “give back” ethos evolves enrichments and trims.

Regional sourcing provides **genuine flair** / Re-exploration of local craft to preserve textile artistry and artisan communities / Culturally responsible products / Social commitment / Handmade aesthetic / Sustainability-stamped designs / Color, texture and pattern amalgamations



MATERIAL INSPIRATIONS

TRIMS + EMBELLISHMENTS

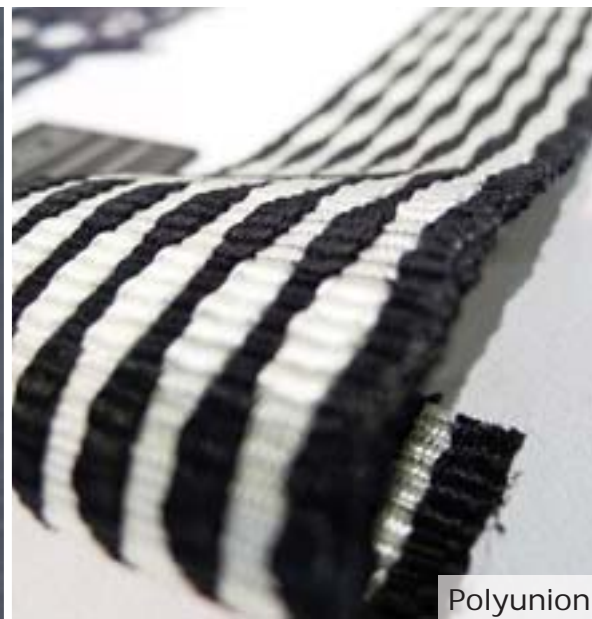


While leading embellishment and trim manufacturers often develop products specifically from custom requests, suppliers are nonetheless prepared each season with ranges to meet many style choices.

In this report, Stylesight synthesizes Women's retail, S/S 13 and Pre-Fall 13 runways, and S/S 14 accessory supply collections, calling out the top 10 concepts for apparel embellishments and trims. In anticipation of upcoming trade shows, Stylesight highlights five directional product types, and gives a sneak peek at F/W 13 collections and S/S 14 previews, which will be on full display at [Munich Fabric Start](#) (February 5-7), [Milano Unica](#) (February 6-8) and [ModAmont](#) (Paris, February 12-14).



Tory Burch



Polyunion



Lucas Sponchiado



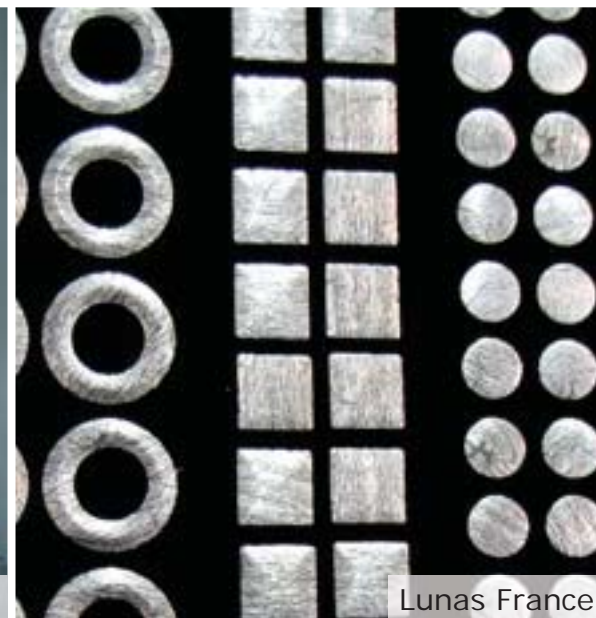
Katsumi Co.



Madeira



Santiago Calatrava



Lunas France

ARCHITECTURAL STYLE CONCEPT

Sleek [rational](#) styles reference the work of architect Santiago Calatrava, bringing high-tech ideas to fashion-forward enhancements.

Heat-press tapes / Contrast piping, bias, ribbon and seam-welding embellishments / Black and white plays / Mathematical constructions / Repeat placements / Related Reports: [Continued Lines](#), [Logical Lines](#), [Lattice Work](#)

MADEIRA

EMBROIDERY THREAD

For sourcing information and swatch requests, please contact service@madeira.de.

